

ESplan/VXpro – Starter-Kit (Project-page limit: 100 pages)

ESplan is an easy-to-learn software for designing circuit - and control diagrams in electrical and fluid. Automated functions determine the material needs and manufacturing- and production- data.

With the CAE/CAD software **ESplan** you can efficiently create technical documentation of industrial switchgear and control systems.

This powerful and practice-orientated software program allows the holistic and comprehensive electrical engineering in the process engineering, fluid, switchgear, control engineering and mechatronics.

The goal of highest cost-savings by optimizing the workflow from the designing up to production, requires specific performance characteristics.

The conceptional idea of the ESplan is to ensure efficient performance with an open and technically versatile system for the planning at a single workstation as well as implementation in global system structures.

ESplan is a CAE and CAD program at the same time. The object orientated thought connects the graphics and the database object. Through parallel instead of serial threads (multi threads) in real-time, usual generation runs are optimized. In **ESplan** terminal diagrams & Co. are ready instantaneously and not created in a separate step.

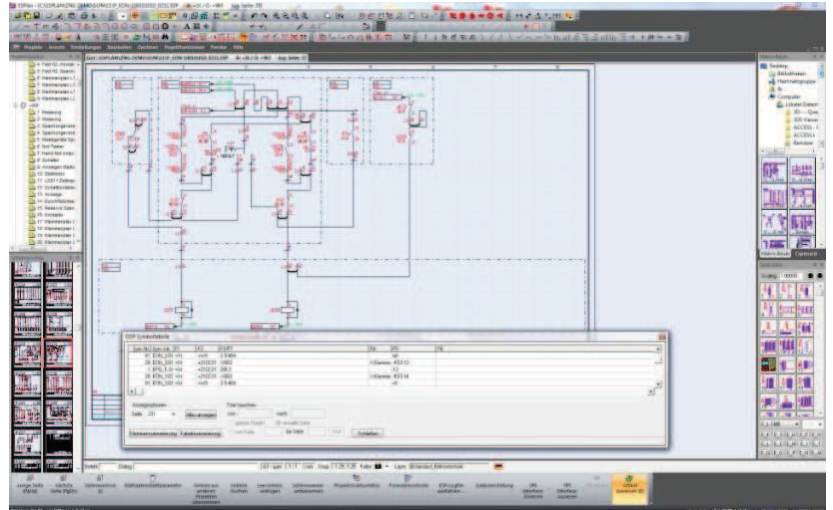
For the easy usage **ESplan** supports the user with the Pass-Over function. Whilst moving the mouse over the screen, the system selects in a tool tip window the according commands of the right mouse button. Attachment units and symbols are recognized automatically and can be edited quickly by using the correct system functions.

Global requirements are served by the Unicode capable solution. It is possible to use Chinese, Japanese, Cyrillic and other character fonts.

CAD data exchange is guaranteed by the worldwide standard DWG/ DXF.

With the identification of blocks (also "block in block"), the Unicode capability of different fonts like TTF and SHX and much more features, the import and export of CAD data becomes a real pleasure.

ESplan/VXpro R15. By the beginning of this year the current page limited VXpro license has been given an entirely new user interface developed after Microsoft's "look and feel". ESplan comes up with top features and a completely new graphic user interface.



ESplan/VXpro – Product information (limit: 100 pages) € 1.125, 00

ESplan evaluates all circuit diagram data in real time. In automated, parallel processes these information are determined without generation runs (“multithreading”). Including:

- Drawing frame data
- Project index
- Device index
- Terminal diagrams
- Sums- and parts- lists
- Cable plans
- Cable lists
- Coil-, cross reference and layout controls
- all cross reference functions

Included are symbol libraries in the electrical and building services (about 2000 symbols). The free symbol and macro designing of your own libraries is easy and fast possible. It is possible to connect to any ODBC- capable manufacturer’s database.

ESplan offers extensive project functions and possibilities in symbol- and macro libraries :

- Project forwarding via email directly
- device box function

ESplan is also a 2D system. It allows:

- a great deal of drawing functions
- design freely with open scales and units
- dimensioning function (architecture / machinery construction)
- pages sizes are free definable
- DXF- import/ export / DWG Import
- picture file import

ESplan / VXpro as a starter package is the ideal limited solution for a low-cost-start into the professional world of high-end solutions in the electrical CAE / CAD segment. Designed projects are upward compatible to all other ESplan versions. An upgrade to higher versions is possible at any time without problems.

To reach the economic benefits of Esplan/VXpro fast, we recommend you to participate in a training course in Langenfeld. Take advantage from our experience in a training and develop together with us your own knowledge base in an efficient and quick way.

The completion of a maintenance agreement will be very useful for you. This is the only cost-effective way to get the newest improvements and updates. For the future in a rapidly changing technology market you have a guarantee for the current data format compatibility with other ESplan versions and projects. Hotline service included.

Inform yourself more about current prices or simply request an individual offer:

ESP CAD/CAE Vertriebs GmbH

Duesseldorferstrasse 14

D-40764 Langenfeld

Fon: +49 (0) 2173-15511

www.esplan.eu

info@espgmbh.com

Recipient:

ESP CAD/CAE Vertriebs GmbH
 Duesseldorfer Strasse 14
 D-40764 Langenfeld

Please, print this order form, *fill it in readable characters* and then FAX it to
+49 (0) 2173 / 18 701

Purchaser:

Company	
Name / dept.	
E-Mail / url.	
Phone / fax	
Adress / no.	
ZIP / city / state	

Alternate delivery address must be announced.

Hereby we order the following item(s):

Please mark	Description	Quantity resp. days	Unit price	Total price
	ESplan/PE 20 pages/project limit, Electrical Engineering		189,--	
	ESplan/VX 70 pages/project limit, Electrical Engineering / Fluid		699,--	
	ESplan/VXpro 100 pages/project limit, Electrical Engineering / Fluid, Layermanagement, DWG-Import		1.125,--	
	ESplan Viewer Read and print ESplan projects		45,--	
	Seminar basic 1 person/day To participate in Langenfeld by arrangement		450,--	
	HotlineService (only ESplan/PE) 1 year from date of purchase incl. using hotline		60,--	
	Maintenance and support (from VX) Update service and phone/ e-mail support		485,--	
			Total in €	

We will confirm your order after receipt by e-mail and send the invoice appending. All terms and conditions of the contractor. Prices in Euro excluding VAT. Payment in advance. Delivery: Free shipping immediately after payment.

_____ / _____ / _____ / _____
 Date / Name block lettering / authorized signature / official company stamp